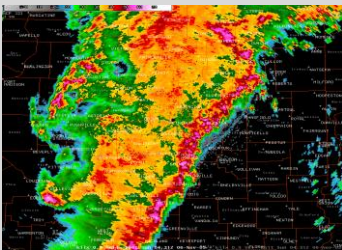
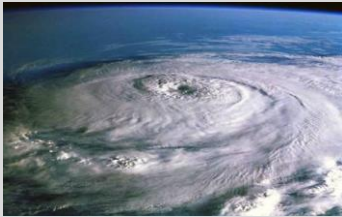


Hurricane Sandy Update

Prepared Saturday, October 27, 2012



*M
warnings, superior forecasts, and
frequent updates.*

**EXCLUSIVE
WEATHER**

Phone:
908.674.0891

E-mail:

jthompson@exclusiveweather.com

UPDATE SUMMARY:

There haven't been too many significant changes in our overall thinking thus far. The only adjustment we are making is in the timing of the storm and its arrival with **the storm probably making landfall by Monday evening now, rather than midday Monday**. Monday morning will still have showers and t-storms around with winds picking up quickly as the morning/day progresses, but it **looks like Monday afternoon, Monday evening, and early Tuesday morning** will be the worst part of the storm for central/northern NJ (including NYC metro and Long Island).

As far as impact, **we believe it will be the strong and very gusty winds that will cause the most problems for our region and flooding won't be as severe. As a result, downed trees and power lines will lead to widespread and probably lengthy power outages for the area!** The heaviest rains will be across eastern NC into MD, DE, southeastern PA, and far southern NJ. Of course, if the track were to change and it makes landfall closer to the NYC metro area or around Long Island, then the flooding/heavy rain threat would increase, but we don't see this being the case right now.

LATEST ON SANDY:

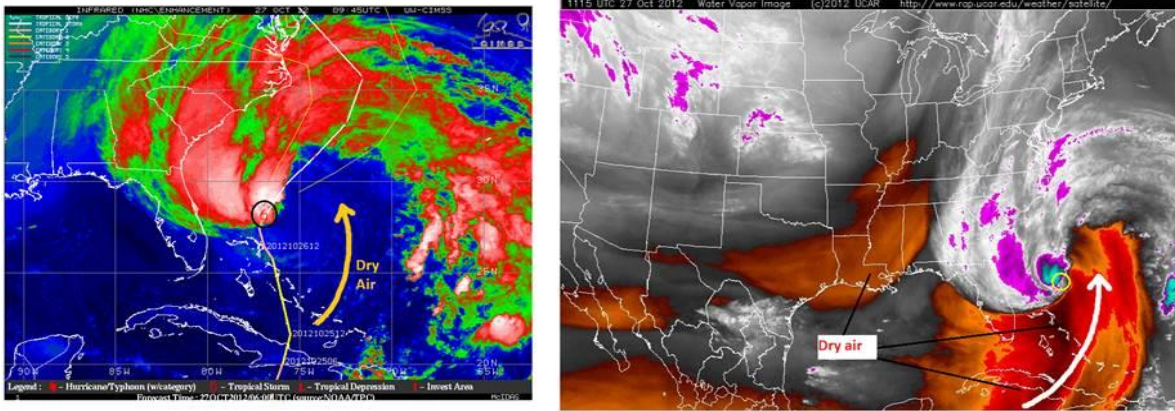
Sandy is now a Tropical Storm, after dry air the past 24-36 hours continues to work into the south and now eastern flank of this storm, limiting its ability to strengthen. Strong wind shear is also helping to weaken it as well. It is possible that Sandy will see a bit of strengthening, possibly back to a weak Cat 1 hurricane by Sunday/Monday, just before making landfall. However, it could also stay a strong Tropical Storm – a very real possibility here. This doesn't really change the impact to our region that much, though.

As we can see from the latest Doppler Radar imagery below, bands of showers and t-storms producing heavy rainfall are offshore of the Southeast US and coming ashore in SC and NC. All of the rain and convection with this storm is on the west and north-central portions of the storm, while the dry air is killing rain/convection from the south-central to eastern portions of the storm. This will be important to note for our landfall and impacts to our region come Monday into Tuesday. **Because of this, most of the heaviest rain and flooding will be along and to the WEST of where the center of Sandy makes landfall.** Thus, why I believe the heaviest rainfall (5"-12" totals) will be from eastern NC into eastern VA, much of MD and DE, and into parts of southeastern PA (maybe far southern NJ too).



(Continued next page)

Looking at the latest satellite images below of Sandy, we can see all of that dry air working into the storm and cutting off all t-storm (convection) activity on the southern and eastern portions of the storm. Dry air for a tropical system is a killer and severely limits any intensification and the dry air on the south and eastern sections of this storm is very significant.



Here is the National Hurricane Center’s “official” forecast for Sandy, which takes the storm’s center over land in southeastern coastal NJ by very late Monday evening as either a weak Cat 1 storm or a strong Tropical Storm.



Here are the latest available hurricane model forecast tracks (0600 GMT runs). We are waiting for the updated (1200 GMT) runs to roll out and they will be available within the next hour or two. Notice the strong model agreement now of the center making landfall either over coastal DE or around Cape May, NJ. A few still show a stronger recurve back to the west and a landfall closer to eastern VA or southeastern MD (probably unlikely, however).

