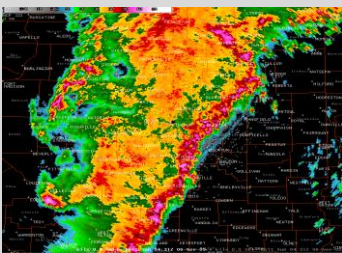


Hurricane Sandy Update

Prepared Friday, October 26, 2012



Major weather events advanced warnings, superior forecasts, and frequent updates.

Here is what we see happening with Hurricane Sandy right now. As always, these ideas could change a bit over the next 48-72 hours, but **confidence is now high with the details below** and we expect only minor revisions will be made this weekend.

Hurricane Sandy will be making landfall around eastern MD or DE around midday Monday (center of storm making landfall). It will come ashore as a Cat 1 hurricane w/ winds probably around 80-85MPH, producing gusts in the 95MPH-105MPH range. These strongest winds will primarily be felt across the coastal areas of eastern MD and across DE.

For NJ and the NYC Metro area, the biggest impact will come from the winds and the potential for many downed trees & power lines, leading to some extensive power outages. Right now, we do not see the rain being excessive to the point that most will see amounts in the 2"-5" range. This is still enough to cause some problems and it could lead to some minor/moderate flooding concerns on the Raritan River. **The biggest rainfall impacts will be found across eastern VA, much of MD, all of DE, and into far southern NJ, where amounts in the 5"-10" range are very likely...even some 10"-14" totals could be found in a few locations.**

TIMING OF THE STORM: There will be some outer bands of showers/t-storms hitting our region by midday Sunday and intensifying a bit by the evening hours. Winds will not be too bad on Sunday, but will be increasing significantly by Sunday evening into early Monday morning. **The strongest winds in central/northern NJ (including NYC metro and Long Island) area will be from Monday morning through the afternoon hours of Monday when gusts of 40MPH – 70MPH are very likely.** The storm will “collapse” rather quickly once moving inland Monday afternoon and evening, which will diminish the winds. However, there will continue to be rain showers around through Monday evening and off-and-on throughout the day Tuesday, before letting up and clearing out by Tuesday evening into Wednesday. This is when the clean-up and recovery will begin.

EXCLUSIVE WEATHER

Phone:
908.674.0891
E-mail:

jthompson@exclusiveweather.com

