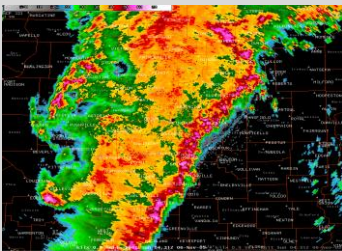


Special Weather Report

Update on Hurricane Sandy threat

Prepared Thursday, October 25, 2012



Major weather events advanced warnings, superior forecasts, and frequent updates.

We wanted to give our clients a quick update on what we see happening with Hurricane Sandy and her impact to our region. We will send out updates again tomorrow and over the weekend for everyone as well.

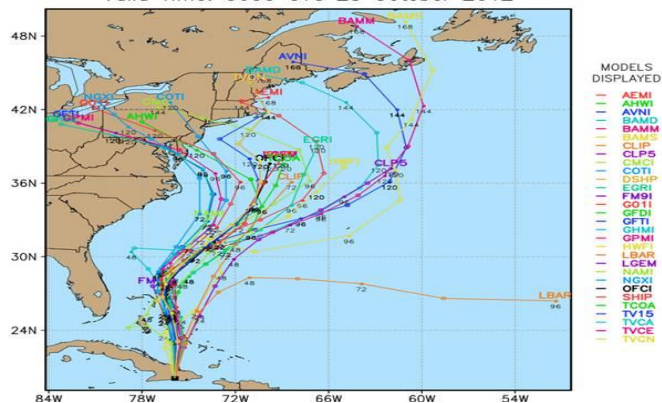
Not much has changed in our thinking from the other day and if anything, the hurricane models have also now shifted to a thinking of this storm turning back to the Northwest and striking anywhere from MD to MA on Monday...which is what the European (ECMWF) operational and ensemble guidance have been suggesting for several days now. The National Hurricane Center has the storm staying a hurricane and then weakening to a sub-tropical storm just before getting to our neck of the woods – although their track is still too far out to sea (in our opinion) and we believe they will correct in the coming days.

For impact, we believe this storm will make landfall anywhere from Cape May to Long Island (the center of the storm) and drift north-northwestward over our region. **This will occur primarily on Monday with that being the worst weather day.** Of course high winds will be an issue, which will produce downed trees and power lines – probably tropical storm force winds will be the strongest the region will see (39-65MPH). But, the largest impact will likely be from the moderate to heavy rainfall that will occur from MD to NJ, eastern PA, and probably the NYC metro area. We could see 5"-8" totals with this storm (maybe isolated higher totals as well). Thus, flooding could be a big impact by Tuesday, possibly lingering into Wednesday, as this will be when rivers/streams crest. **The storm itself (and the rain) will probably be over by Tuesday afternoon/evening.**

So, again, this is still an evolving situation, and we will update you again tomorrow on any changes. But, **confidence has most definitely increased in this system impacting our region by Mon-Tue.**

Below are the latest hurricane model outputs/tracks w/ the National Hurricane Center's "official" track being in the middle (they always take the average it seems)...theirs is the OFCI one in black. But notice how there are several models turning this back to the northwest, thanks to an upper-level ridge over Newfoundland and SW of Greenland by then that will steer the storm in this direction. Look for NHC (National Hurricane Center) to adjust and eventually take this storm on an impact of DE, NJ, or Long Island (in our opinion).

Atlantic HURRICANE SANDY Model Tracks
Valid Time: 0600 UTC 25 October 2012



EXCLUSIVE WEATHER

Phone:
908.674.0891
E-mail:

jthompson@exclusiveweather.com