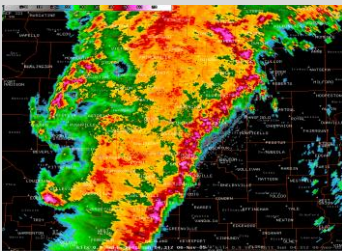


## Special Weather Report

# Hurricane for Mid-Atl/Northeast next Mon-Tue?

Prepared Tuesday, October 23, 2012



*Major weather events advanced warnings, superior forecasts, and frequent updates.*

We don't know if anyone has seen or heard any recent discussions about Tropical Storm Sandy in the news the past day or two. However, we wanted to at least let our clients know that this storm is currently on our radar for impacting the Mid-Atlantic/Northeast/New England area by Monday or Tuesday.

The "official" hurricane forecast model outputs keep the storm well enough out to sea as to not impact our region, as does the American/GFS model outputs (to which most of these hurricane models are based). **But, two of our better forecast models out there, the European (ECMWF) and the Canadian (GGEM) models, both of which are not referenced by the National Hurricane Center or the media outlets, have been advertising **Sandy to become a hurricane offshore of the eastern seaboard and turn back to the NORTHWEST and strike anywhere from NJ/DE to Cape Cod on Monday into Tuesday (Oct 29-30).**** Even the European ensembles are seeing this occurring.

So, as a result, this is something to be aware of now, as this has the POTENTIAL now to be a big impact to our region – primarily from heavy rain and flooding, as well as some downed trees. Again, this is all assuming these other forecast models are on to something here.

As is always the case with these tropical systems, things can change. But, we will keep a very close eye on the developments and the computer forecast guidance, as well as letting our clients know if and when things change in what we see. Confidence should be increasing in the forecast as the week progresses and we should have a better idea about the eventual track of this system, based on how the upper-level pattern is evolving.

**Just an early "heads up" for now!!**

**EXCLUSIVE  
WEATHER**

Phone:  
908.674.0891

E-mail:

jthompson@exclusiveweather.com